

R5

Oil-lubricated rotary vane vacuum pumps
RA 0025 F, RA 0040 F, RA 0063 F, RA 0100 F

Instruction Manual



Table of Contents

1	Safety	3
2	Product Description	4
2.1	Operating Principle	5
2.2	Intended Use	5
2.3	Start Controls.....	6
2.4	Optional Accessories.....	6
2.4.1	Gas Ballast Valve.....	6
2.4.2	Inlet Filter	6
2.4.3	Level Switch	6
3	Transport	7
4	Storage	8
5	Installation	9
5.1	Installation Conditions	9
5.2	Connecting Lines / Pipes	10
5.2.1	Suction Connection	10
5.2.2	Discharge Connection.....	11
5.3	Filling Oil.....	11
5.4	Fitting the Coupling	12
6	Electrical Connection	14
6.1	Machine delivered without Control Box or Variable Speed Drive (VSD)	14
6.2	Wiring Diagram Single-Phase Motor	15
6.3	Wiring Diagram Three-Phase Motor.....	15
6.4	Electrical Connection of the Monitoring Devices	16
6.4.1	Wiring Diagram Level Switch (Optional).....	16
7	Commissioning	18
7.1	Conveying Condensable Vapors.....	19
8	Maintenance	20
8.1	Maintenance Schedule	21
8.2	Oil Level Inspection.....	21
8.3	Oil and Oil Filter Change	22
8.4	Exhaust Filter Change.....	24
9	Overhaul	26
10	Decommissioning	27
10.1	Dismantling and Disposal	27
11	Spare Parts	28
12	Troubleshooting	29
13	Technical Data	32
14	Oil	34
15	EU Declaration of Conformity	35
16	UK Declaration of Conformity	36

1 Safety

Prior to handling the machine, this instruction manual should be read and understood. If anything needs to be clarified, please contact your Busch representative.

Read this manual carefully before use and keep for future reference.

This instruction manual remains valid as long as the customer does not change anything on the product.

The machine is intended for industrial use. It must be handled only by technically trained personnel.

Always wear appropriate personal protective equipment in accordance with the local regulations.

The machine has been designed and manufactured in accordance with the state-of-the-art methods. Nevertheless, residual risks may remain, as described in the following chapters and in accordance with the chapter *Intended Use* [→ 5].

This instruction manual highlights potential hazards where appropriate. Safety notes and warning messages are tagged with one of the keywords DANGER, WARNING, CAUTION, NOTICE and NOTE as follows:



DANGER

... indicates an imminent dangerous situation that will result in death or serious injuries if not prevented.



WARNING

... indicates a potentially dangerous situation that could result in death or serious injuries.



CAUTION

... indicates a potentially dangerous situation that could result in minor injuries.



NOTICE

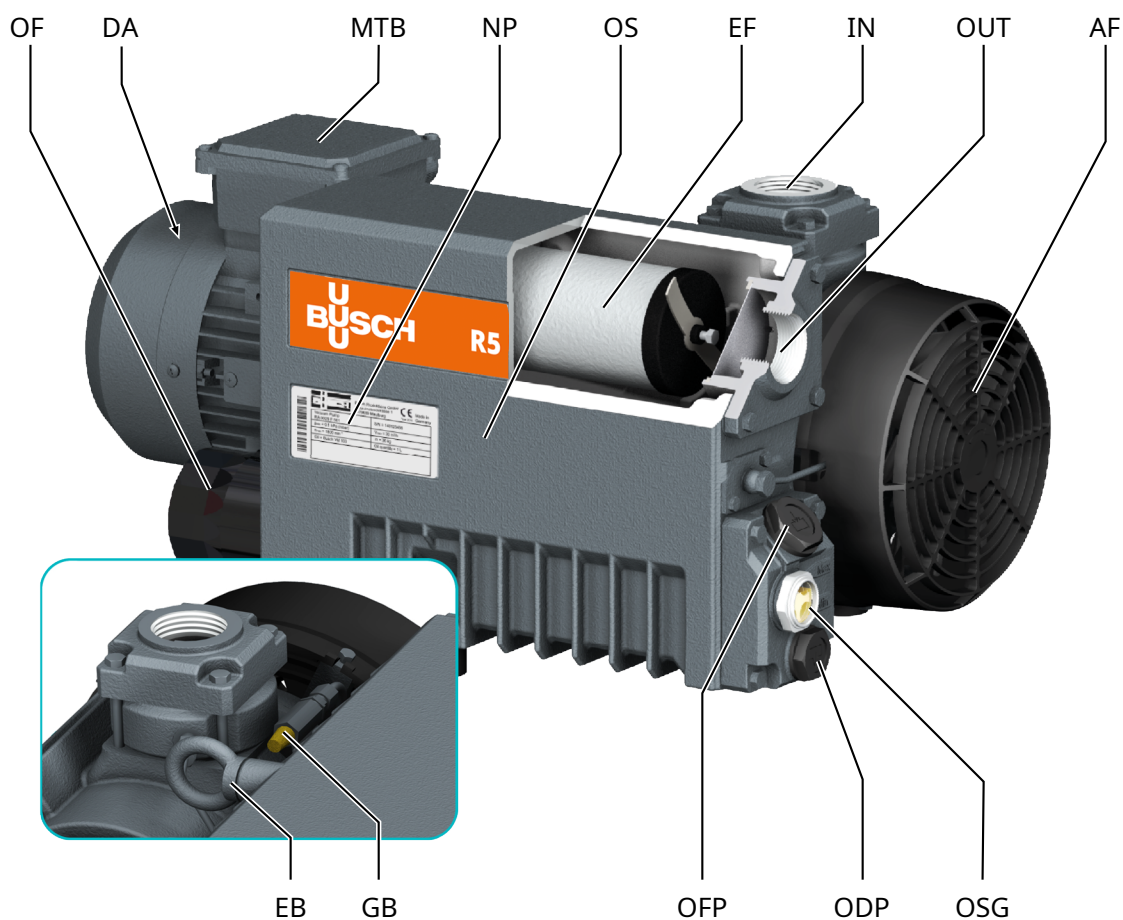
... indicates a potentially dangerous situation that could result in damage to property.



NOTE

... indicates helpful tips and recommendations, as well as information for efficient and trouble-free operation.

2 Product Description



Description

IN	Suction connection	OUT	Discharge connection
OSG	Oil sight glass	ODP	Oil drain plug
NP	Nameplate	OF	Oil filter
DA	Directional arrow	OS	Oil separator
EF	Exhaust filter	OFF	Oil fill plug
GB	Gas ballast valve	MTB	Motor terminal box
EB	Eye bolt	AF	Axial fan



NOTE

Technical term.

In this instruction manual, we consider that the term 'machine' refers to the 'vacuum pump'.

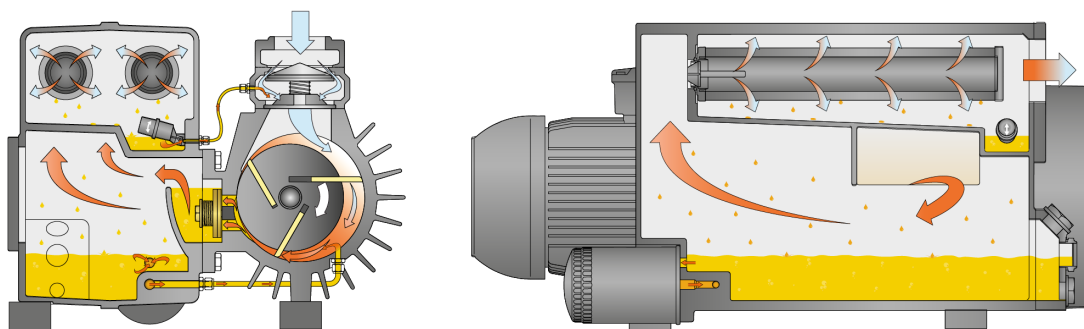


NOTE

Illustrations.

In this instruction manual, the illustrations may differ from the appearance of the machine.

2.1 Operating Principle



The machine works on the rotary vane principle.

The oil seals the gaps, lubricates the vanes and takes away compression heat.

In order to avoid reverse rotation after switching off, the machine is equipped with a non-return valve (NRV).

In order to avoid solids from entering, the machine is equipped with an inlet screen (IS).

The oil filter cleans the circulating oil.

Exhaust filters separate the oil from the discharged gas.

2.2 Intended Use



WARNING

In case of foreseeable misuse outside the intended use of the machine.

Risk of injuries!

Risk of damage to the machine!

Risk of damage to the environment!

- Make sure to follow all instructions described in this manual.

The machine is intended for the suction of air and other dry, non-aggressive, non-toxic, non-ignitable and non-explosive gases.

Conveying of other media leads to an increased thermal and/or mechanical load on the machine and is permissible only after a consultation with Busch.

The machine is intended for the placement in a non-potentially explosive environment.

The machine is designed for indoor installations. For outdoor installations, consult your Busch representative for special precautions.

The machine is capable of maintaining ultimate pressure, see *Technical Data* [→ 32].

Version with float valve (standard):

The machine is suitable for continuous operation.

Version with oil return valve:

During operation oil accumulates at the bottom of the upper chamber of the oil separator, which cannot flow down into the bottom chamber, as long as the machine runs. After 10 h of continuous operation near ultimate pressure, in case of operation in rough vacuum, after a shorter time:

- The machine must be shut down for at least 15 min
- The oil can run down from the upper chamber of the oil separator into the bottom chamber.

Note: The non-return valve (NRV) shouldn't be used as a non-return or shut off valve for the System. The non-return valve is only to protect the machine.

If the machine needs to be maintained after shutdown:

- Provide an additional manual or automatic operated non-return valve in the suction line.

Permitted environmental conditions, see *Technical Data* [→ 32].

2.3 Start Controls

The machine comes without start controls. The control of the machine is to be provided in the course of installation.

The machine can be equipped with a soft-starter.

2.4 Optional Accessories

2.4.1 Gas Ballast Valve

The gas ballast valve mixes the process gas with a limited quantity of ambient air to counteract the condensation of vapor inside the machine.

The gas ballast valve has an influence on the ultimate pressure of the machine, see *Technical Data* [→ 32].

2.4.2 Inlet Filter

The inlet filter protects the machine against dust and other solids in the process gas. The inlet filter is available with a paper or polyester cartridge.

2.4.3 Level Switch

The level switch monitors the oil level in the oil separator (OS).

3 Transport



WARNING

Suspended load.

Risk of severe injury!

- Do not walk, stand, or work under suspended loads.



WARNING

Lifting the machine using the motor eye bolt.

Risk of severe injury!

- Do not lift the machine using the eye bolt fitted to the motor. Only lift the machine as shown.

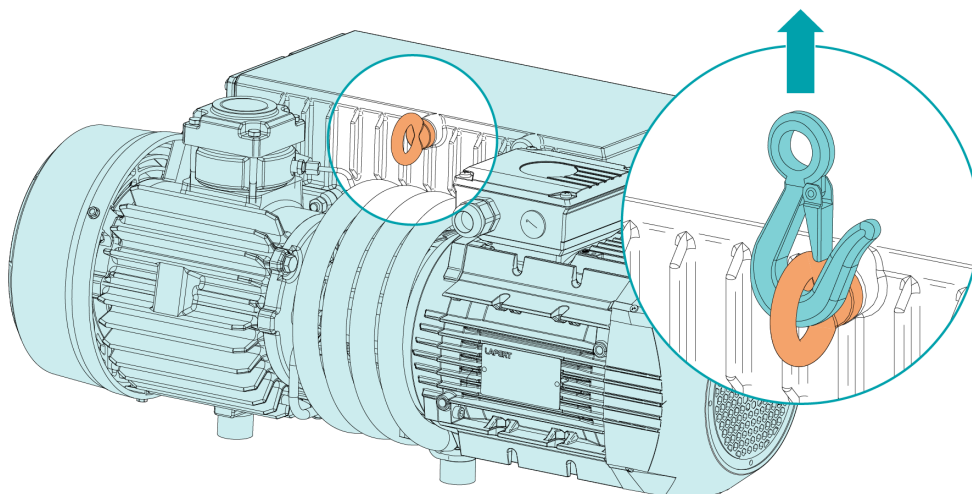


NOTICE

In case the machine is already filled with oil.

Tilting a machine that is already filled with oil can cause large quantities of oil to ingress into the cylinder. Starting the machine with excessive quantities of oil in the cylinder will immediately break the vanes and ruin the machine!

- Drain the oil prior to every transport or always horizontally transport the machine.
- To find out the weight of the machine, refer to the chapter *Technical Data* [→ 32] or the nameplate (NP).
- Make sure that the eye bolt(s) (EB) is/are in faultless condition, fully screwed in and tightened by hand.



- Check the machine for transport damage.

If the machine is secured to a base plate:

- Remove the machine from the base plate.

4 Storage

- Seal all apertures with adhesive tape or reuse provided caps.

If the machine is to be stored for more than 3 months:

- Wrap the machine in a corrosion inhibiting film.
- Store the machine indoors, in a dry and dust free environment and if possible, in original packaging, preferably at temperatures between 0 ... 40 °C.

5 Installation

5.1 Installation Conditions

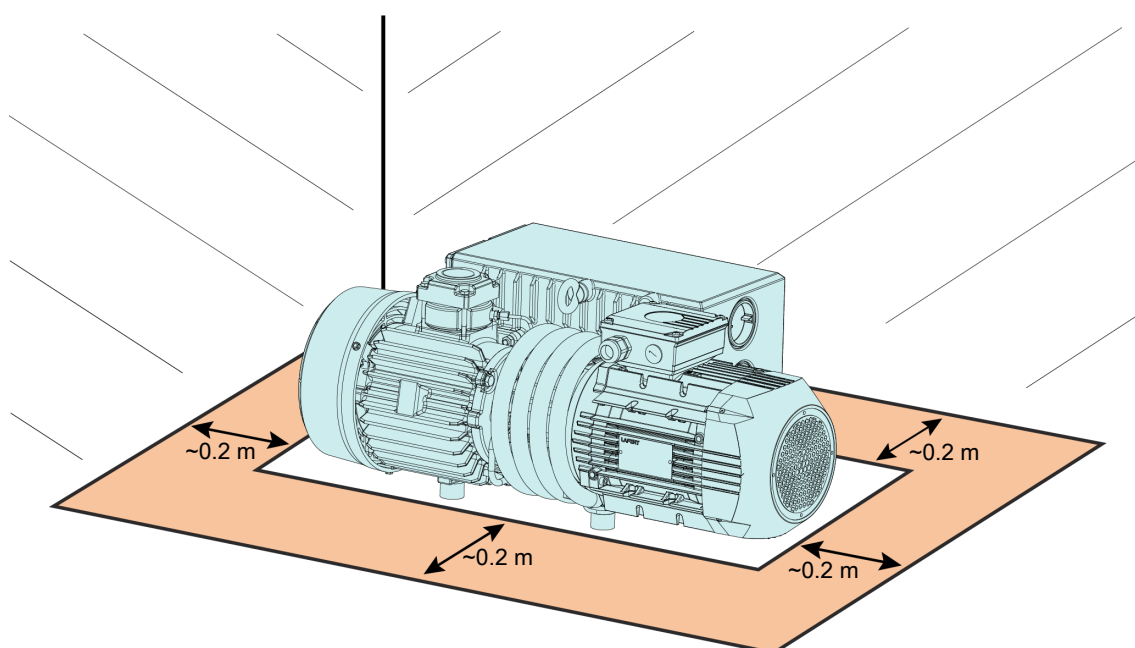
NOTICE

Use of the machine outside of the permitted installation conditions.

Risk of premature failure!

Loss of efficiency!

- Make sure that the installation conditions are fully respected.



- Make sure that the environment of the machine is not potentially explosive.
- Make sure that the ambient conditions comply with the *Technical Data* [→ 32].
- Make sure that the environmental conditions comply with the protection class of the motor and the electrical elements.
- Make sure that the installation space or location is protected from weather and lightning.
- Make sure that the installation space or location is vented such that sufficient cooling of the machine is provided.
- Make sure that cooling air inlets and outlets are not covered or obstructed and that the cooling air flow is not affected adversely in any other way.
- Make sure that the oil sight glass (OSG) remains easily visible.
- Make sure that enough space remains for maintenance work.
- Make sure that the machine is placed or mounted horizontally, a maximum deviation of 1° in any direction is acceptable.
- Check the oil level, see *Oil Level Inspection* [→ 21].
- Make sure that all provided covers, guards, hoods, etc. are mounted.

If the machine is installed at an altitude greater than 1000 meters above sea level:

- Contact your Busch representative, the motor should be derated or the ambient temperature limited.

5.2 Connecting Lines / Pipes

- Remove all protective covers before installation.
- Make sure that the connection lines cause no stress on the connections of the machine. Therefore, we recommend installing flexible lines on the suction and discharge connections.
- Make sure that the diameter of the connection lines over the entire length is at least as large as the connections of the machine.
- Make sure that there is no counter pressure (also called "back pressure") at the discharge connection (OUT).

In case of long connection lines, it is recommended to use larger diameters to avoid a loss of efficiency. In this case, please contact your Busch representative.

5.2.1 Suction Connection



WARNING

Unprotected suction connection.

Risk of severe injury!

- Do not put hand or fingers in the suction connection.



NOTICE

Ingress of foreign objects or liquids.

Risk of damage to the machine !

If the inlet gas contains dust or other foreign solid particles:

- Install a suitable filter (5 micron or less) upstream from the machine.

Connection size(s):

- G1 ¼"

Depending on the specific configuration ordered, other connection dimensions may apply.

If the machine is used as part of a vacuum system:

- Busch recommends the installation of an isolation valve in order to prevent the machine from turning backwards.
- Busch recommends the installation of an isolation valve in order to prevent the oil from flowing back to the vacuum system.
- Make sure that the connection lines cause no stress on the connections of the machine. Therefore, we recommend installing flexible lines on the suction and discharge connections.

5.2.2 Discharge Connection



CAUTION

The discharge gas contains small quantities of oil.

Risk to health!

If air is discharged into rooms where persons are present:

- Make sure that sufficient ventilation is provided.



NOTICE

Discharge gas flow obstructed.

Risk of damage to the machine !

- Make sure that the discharged gas will flow without obstruction. Do not shut off or throttle the discharge line or use it as a pressurized air source.

Connection size(s):

- 1x G1 ¼" ▶ RA 0025/0040 F
- 2x G1 ¼" ▶ RA 0063/0100 F

Depending on the specific configuration ordered, other connection dimensions may apply.

Unless the aspirated air is discharged to the environment right at the machine.

- Make sure that the discharge line either slopes away from the machine or provide a liquid separator or a siphon with a drain cock, so that no liquids can flow back into the machine.
- Make sure that the connection lines cause no stress on the connections of the machine. Therefore, we recommend installing flexible lines on the suction and discharge connections.

5.3 Filling Oil



NOTICE

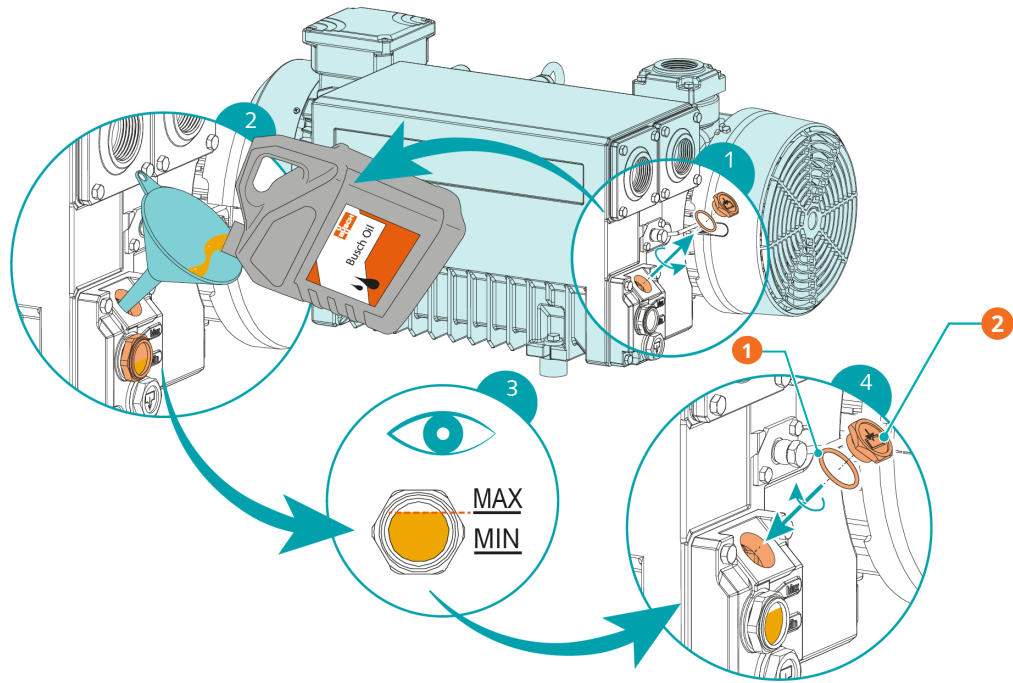
Use of an inappropriate oil.

Risk of premature failure!

Loss of efficiency!

- Only use an oil type which has previously been approved and recommended by Busch.

For oil type and oil capacity see *Technical Data* [→ 32] and *Oil* [→ 34].



Description			
1	1x o-ring part no.: 0486 000 590	2	Tighten with 12 Nm

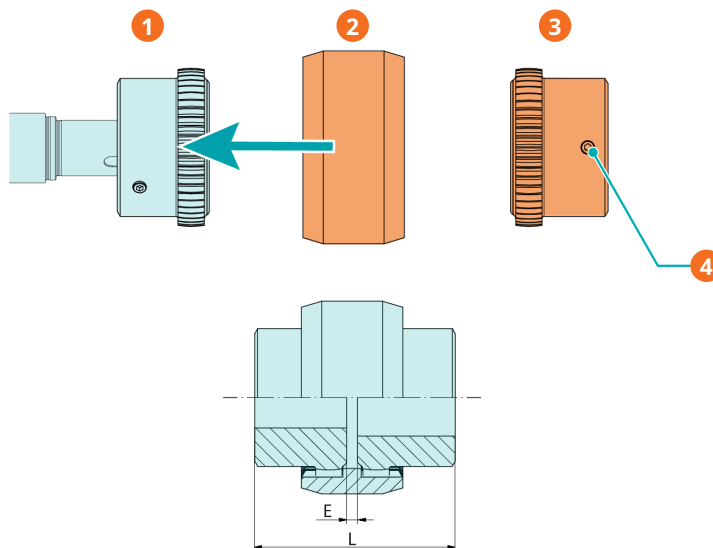
5.4 Fitting the Coupling



NOTE

Radial screw.

For trouble-free operation, use thread locking glue to secure the radial screw.



Description			
1	Coupling hub (machine side)	2	Coupling sleeve

Description			
3	Coupling hub (motor side)	4	Radial screw / admissible torque: 10 Nm

In case of a machine delivery without motor:

- Fit the second coupling hub on the motor shaft (separately delivered).
- Axially adjust the sleeve in such a way until value "E" (or "L") is reached.
- When the coupling adjustment is done, lock the coupling hub by tightening the radial screw.
- Mount the motor on the machine by including the coupling sleeve.

For further coupling information, go to www.ktr.com and download the instruction manual of the BoWex® coupling.

English	German	French
		
<i>Instruction Manual - English</i>	<i>Instruction Manual - German</i>	<i>Instruction Manual - French</i>

6 Electrical Connection



DANGER

Live wires.

Risk of electrical shock!

- Electrical installation work must only be executed by qualified personnel.

CURRENT PROTECTION OF THE CUSTOMER INSTALLATION:



DANGER

Missing current protection.

Risk of electrical shock!

- Current protection in accordance with EN 60204-1 must be provided by the customers on their installation(s).
- The electrical installation must comply with the applicable national and international standards.



NOTICE

Electromagnetic compatibility.

- Make sure that the motor of the machine will not be affected by electric or electromagnetic disturbance from the mains, if necessary, seek advice from Busch.
- Make sure that the EMC of the machine is compliant with the requirements of your supply network system, if necessary, provide further interference suppression (EMC of the machine, see *EU Declaration of Conformity* [→ 35] or *UK Declaration of Conformity* [→ 36]).

6.1 Machine delivered without Control Box or Variable Speed Drive (VSD)



DANGER

Live wires.

Risk of electrical shock!

- Electrical installation work must only be executed by qualified personnel.
- Make sure that the power supply for the motor is compatible with the data on the nameplate of the motor.
- If the machine is equipped with a power connector, install a residual current protective device to protect persons in case of a defective insulation.
 - Busch recommends installing a type B residual protective device suitable for the electrical installation.
- Provide a lockable disconnect switch or an emergency stop switch on the power line so that the machine is completely secured in case of an emergency situation.

- Provide a lockable disconnect switch on the power line so that the machine is completely secured during maintenance tasks.
- Provide an overload protection according to EN 60204-1 for the motor.
 - Busch recommends installing a D-curve circuit breaker.
- Connect the protective earth conductor.
- Electrically connect the motor.



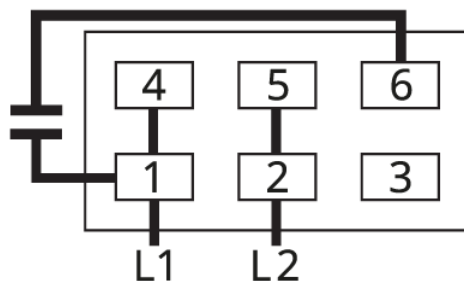
NOTICE

Incorrect connection.

Risk of damage to the motor!

- The wiring diagrams given below are typical. Check the inside of the terminal box for motor connection instructions/diagrams.

6.2 Wiring Diagram Single-Phase Motor



6.3 Wiring Diagram Three-Phase Motor



NOTICE

Incorrect direction of rotation.

Risk of damage to the machine!

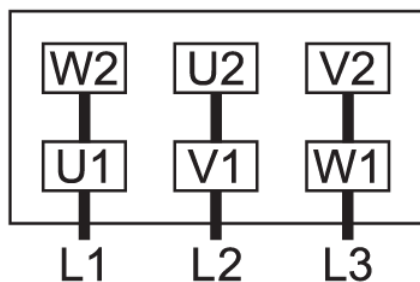
- Operation in the wrong direction of rotation can destroy the machine in a short time! Prior to start-up, ensure that the machine is operated in the right direction.

- Determine the intended direction of rotation with the arrow (stuck on or cast).
- Jog the motor briefly.
- Watch the fan wheel of the motor and determine the direction of rotation just before the fan wheel stops.

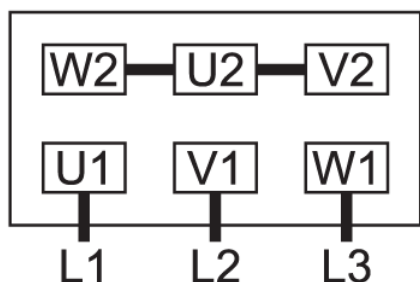
If the rotation of the motor must be changed:

- Switch any two of the motor phase wires.

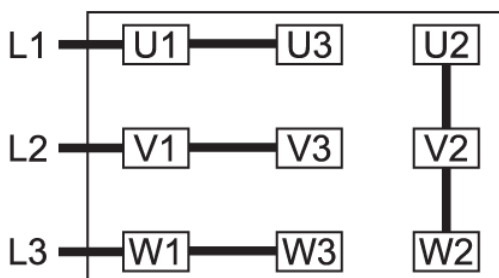
Delta connection (low voltage):



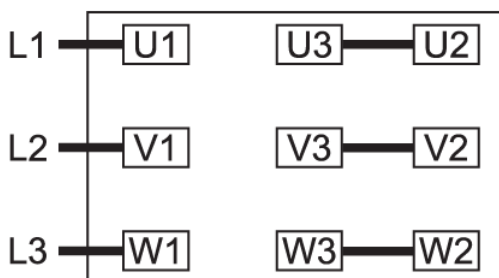
Star connection (high voltage):



Double star connection, multi-voltage motor with 9 pins (low voltage):



Star connection, multi-voltage motor with 9 pins (high voltage):



6.4 Electrical Connection of the Monitoring Devices



NOTE

To prevent potential nuisance alarms, Busch recommends that the control system is configured with a time delay of at least 20 seconds.

6.4.1 Wiring Diagram Level Switch (Optional)

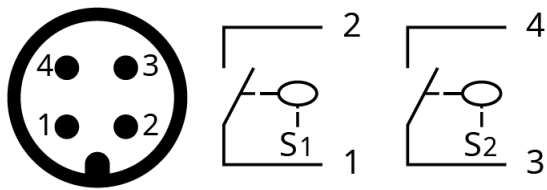
Part no.: 0652 203 669

Electrical data: $U = \text{max. } 250 \text{ V}$; $I_{\text{max}} = 1.0 \text{ A}$; $P = 50 \text{ W/VA}$; IP 65

Switching element function: Reed-contact

Contact: 2x NO with isolated voltage and signal output

Switch point: $S1_{\text{trip}}$ ► pin 1 + 2 ► min. level; $S2_{\text{trip}}$ ► pin 3 + 4 ► max. level



7 Commissioning



CAUTION

During operation the surface of the machine may reach temperatures of more than 70°C.

Risk of burns!

- Avoid contact with the machine during and directly after operation.



CAUTION



Noise of running machine.

Risk of damage to hearing!

If people are present in the vicinity of a machine that is not insulated from noise for extended periods of time:

- Make sure to wear hearing protection.



NOTICE

The machine can be shipped without oil.

Operation without oil will ruin the machine in short time!

- Prior to commissioning, the machine must be filled with oil, see *Filling Oil* [→ 11].

- Make sure that the *Installation Conditions* [→ 9] are met.
- Start the machine.
- Make sure that the maximum permissible number of starts does not exceed 30 starts per hour. Those starts should be spread within the hour.
- Make sure that the operating conditions comply with the *Technical Data* [→ 32].
- After a few minutes of operation, check the oil level and top up if necessary.

As soon as the machine is operated under normal operating conditions:

- Measure the motor current and record it as reference for future maintenance and troubleshooting work.

7.1 Conveying Condensable Vapors



CAUTION

Draining the condensate while operating and/or venting the machine.

The discharged gases and/or liquids may reach temperatures above 70°C!

Risk of burns!

- Avoid direct contact with the flow of gases and/or liquids.



CAUTION



Noise of running machine.

Risk of damage to hearing!

If people are present in the vicinity of a machine that is not insulated from noise for extended periods of time:

- Make sure to wear hearing protection.

Water vapor within the gas flow is tolerated within certain limits. The conveyance of other vapors shall be agreed upon with Busch.

If condensable vapors are to be conveyed:

START

- Close the isolation valve* and open the gas ballast valve** (GB)
- Warm up the machine for 30 minutes
- Open the isolation valve* and perform the process
- Close the isolation valve*
- Wait 30 minutes
- Close the gas ballast valve** (GB)

END

* Not included in the scope of delivery.

** Can be considered as optional on some products

8 Maintenance



DANGER

Live wires.

Risk of electrical shock!

- Electrical installation work must only be executed by qualified personnel.



WARNING



The machine is contaminated with hazardous material.

Risk of poisoning!

Risk of infection!

If the machine is contaminated with hazardous material:

- Wear appropriate personal protective equipment.



CAUTION

Hot surface.

Risk of burns!

- Before doing anything that requires touching the machine, let it cool down first.



CAUTION

Failing to properly maintain the machine.

Risk of injuries!

Risk of premature failure and loss of efficiency!

- Maintenance work must only be executed by qualified personnel.
- Respect the maintenance intervals or ask your Busch representative for service.



NOTICE

Using inappropriate cleaners.

Risk of removing safety stickers and protective paint!

- Do not use incompatible solvents to clean the machine.

- Shut down the machine and lock against inadvertent start up.
- Vent the connected lines to atmospheric pressure.

If necessary:

- Disconnect all connections.

8.1 Maintenance Schedule

The maintenance intervals depend very much on the individual operating conditions. The intervals given below are considered as starting values which should be individually shortened or extended as appropriate.

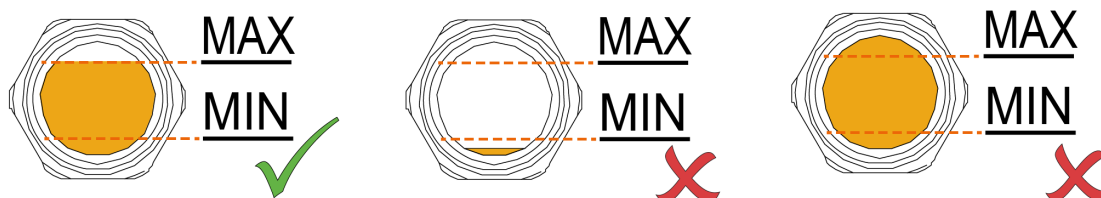
Particularly harsh applications or heavy duty operation, such as high dust loads in the environment or in the process gas, other contamination or ingress of process material, can make it necessary to shorten the maintenance intervals significantly.

Maintenance work	Interval	
	Normal application	Harsh application
<ul style="list-style-type: none"> Check the oil level, see <i>Oil Level Inspection</i> [→ 21]. 	Daily	
<ul style="list-style-type: none"> Check the machine for oil leaks. In case of leaks, have the machine repaired (contact Busch). <p>If an inlet filter is installed:</p> <ul style="list-style-type: none"> Check the inlet filter cartridge, replace if necessary. 	Monthly	
<ul style="list-style-type: none"> Change the oil*, the oil filter* (OF) and the exhaust filters (EF). 	Max. after 4000 hours or after 1 year	Max. after 2000 hours or after 6 months
<ul style="list-style-type: none"> Clean the machine from dust and dirt. <p>In case of a gas ballast valve (GB) being installed:</p> <ul style="list-style-type: none"> Clean the gas ballast valve. <p>If the machine is equipped with an air-oil heat exchanger (AHE):</p> <ul style="list-style-type: none"> Check and/or clean the air-oil heat exchanger. 	Every 6 months	
<ul style="list-style-type: none"> Contact Busch for an inspection. If required, overhaul the machine. 	Every 5 years	

* Service interval for synthetic oil, shorten the interval when using mineral oil, contact Busch Service

8.2 Oil Level Inspection

- Shut down the machine.
- When the machine is stopped, wait 1 minute before checking the oil level.



- Fill up if necessary, see *Oil Filling* [→ 11].

8.3 Oil and Oil Filter Change

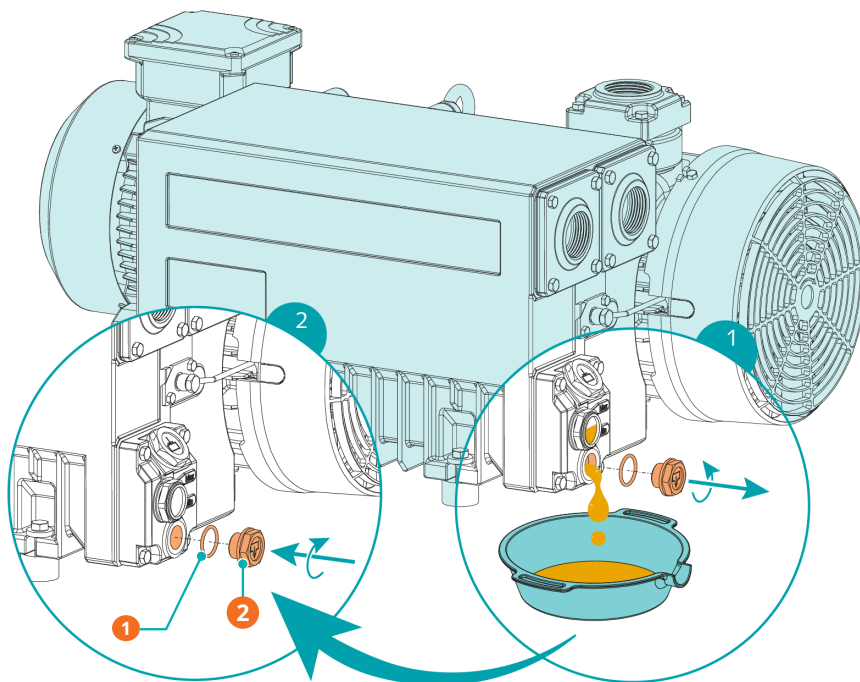
NOTICE

Use of an inappropriate oil.

Risk of premature failure!

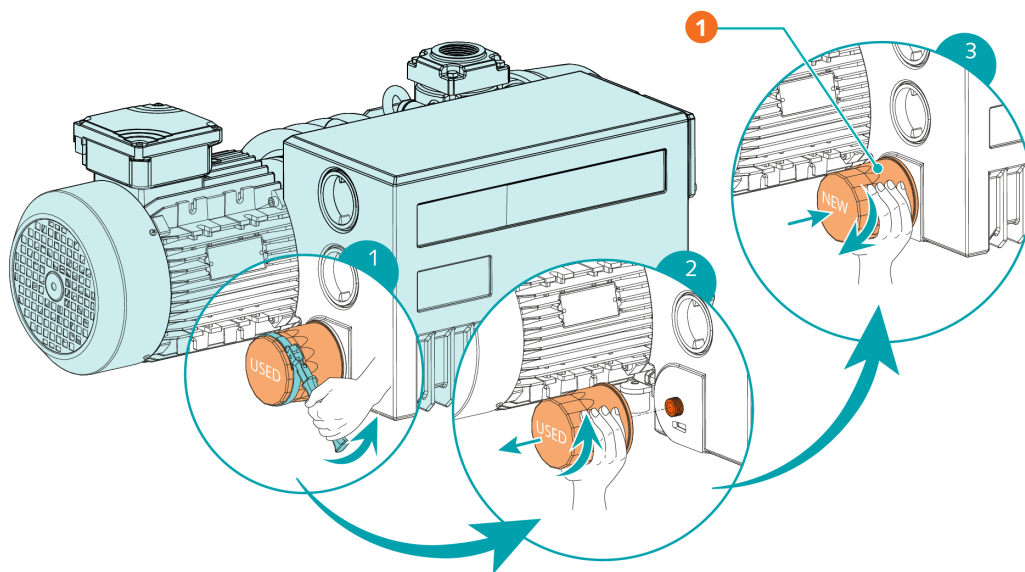
Loss of efficiency!

- Only use an oil type which has previously been approved and recommended by Busch.



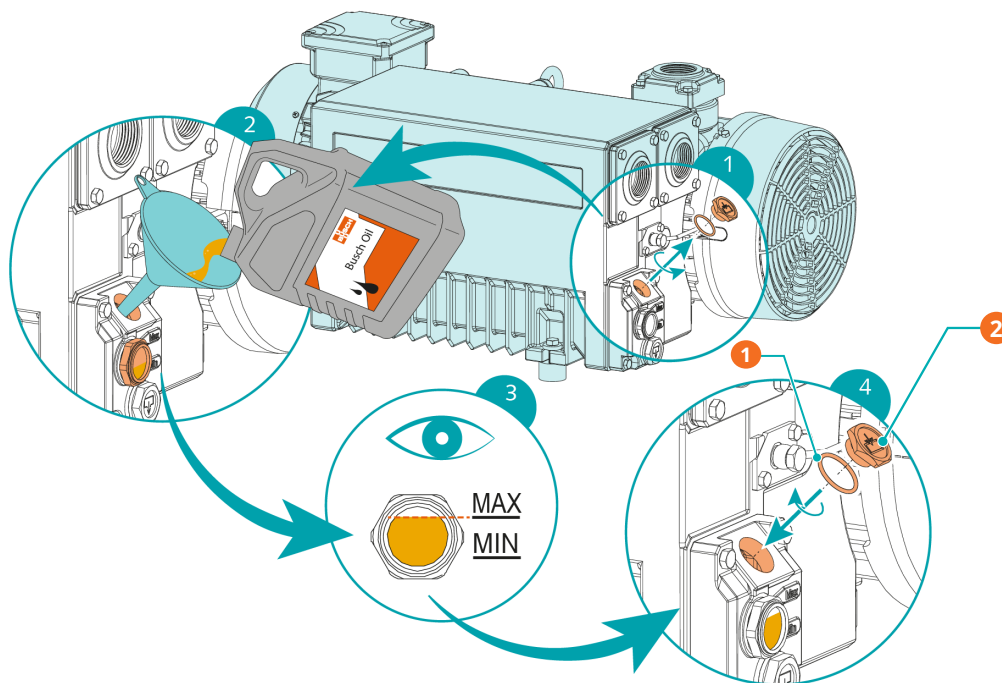
Description

1	1x o-ring, part no.: 0486 000 505	2	Tighten with 12 Nm
---	--------------------------------------	---	--------------------



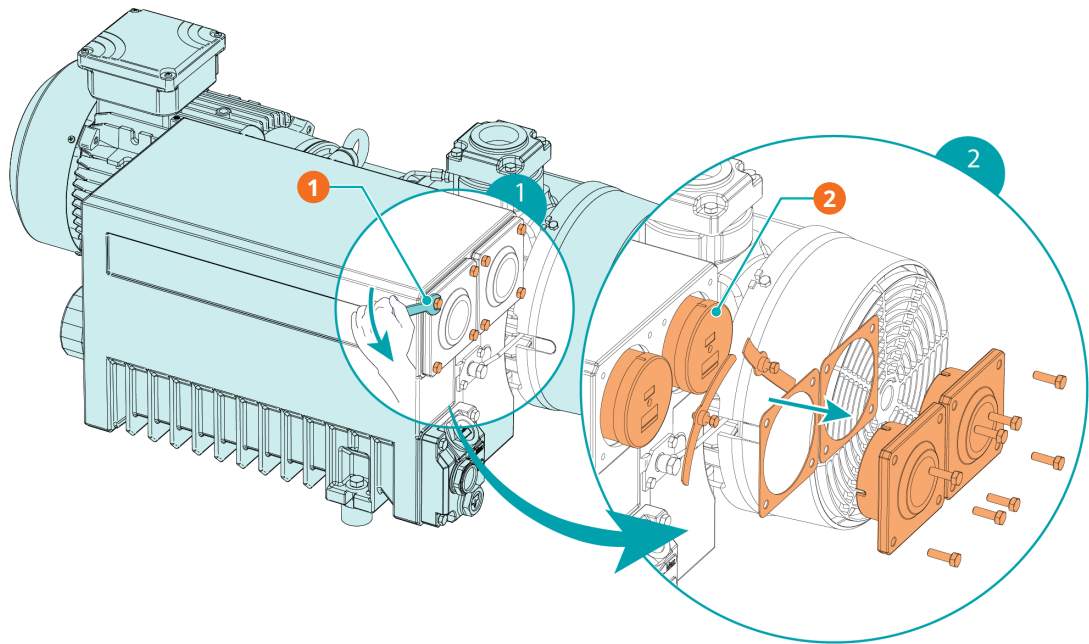
Description	
1	Busch genuine spare parts 1x oil filter (OF), part no.: 0531 000 002

For oil type and oil capacity see *Technical Data* [→ 32] and *Oil* [→ 34].



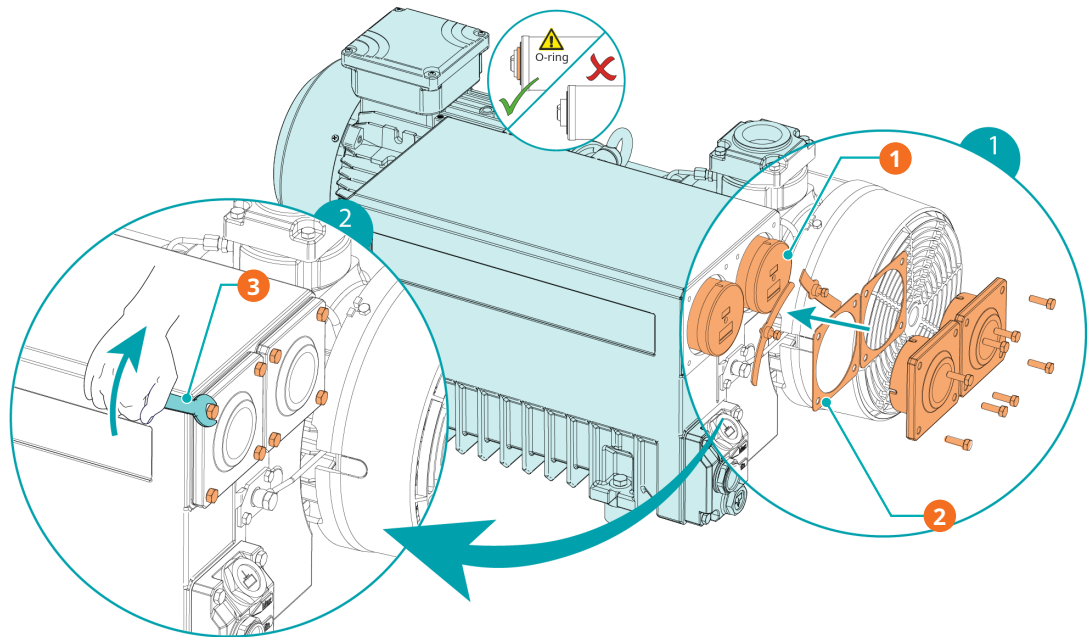
Description	
1	1x o-ring part no.: 0486 000 590
2	Tighten with 12 Nm

8.4 Exhaust Filter Change



Description

1	10 mm wrench	2	RA 0025/0040 F: 1x exhaust filter (EF) RA 0063/0100 F: 2x exhaust filter (EF)
---	--------------	---	--



Description			
1	Busch genuine spare parts RA 0025/0040 F: 1x exhaust filter (EF) part no.: 0532 140 156 RA 0063/0100 F: 2x exhaust filter (EF) part no.: 0532 140 157	2	RA 0025/0040 F: 1x flat gasket RA 0063/0100 F: 2x flat gasket part no.: 0480 000 112
3	10 mm wrench		

9 Overhaul



WARNING



The machine is contaminated with hazardous material.

Risk of poisoning!

Risk of infection!

If the machine is contaminated with hazardous material:

- Wear appropriate personal protective equipment.



NOTICE

Improper assembly.

Risk of premature failure!

Loss of efficiency!

- Any dismantling of the machine that goes beyond anything that is described in this manual should be done by Busch authorized technicians.

If the machine has conveyed gas contaminated with foreign materials which are hazardous to health:

- Decontaminate the machine as much as possible and state the contamination status in a 'Declaration of Contamination'.

Busch will only accept machine accompanied by a signed, fully completed and legally binding "declaration of contamination", downloadable from the following link: buschvacuum.com/declaration-of-contamination.

10 Decommissioning



DANGER

Live wires.

Risk of electrical shock!

- Electrical installation work must only be executed by qualified personnel.



CAUTION

Hot surface.

Risk of burns!

- Before doing anything that requires touching the machine, let it cool down first.

- Shut down the machine and lock against inadvertent start up.
- Disconnect the power supply.
- Vent the connected lines to atmospheric pressure.
- Disconnect all connections.

If the machine is to be stored:

- See *Storage* [→ 8].

10.1 Dismantling and Disposal



WARNING



Machines contaminated with hazardous material.

Risk of poisoning!

Risk of infection!

If the machine is contaminated with hazardous material:

- Wear appropriate personal protective equipment.
- Drain and collect the oil.
- Make sure that no oil drips onto the floor.
- Remove the exhaust filters.
- Remove the oil filter.
- Separate special waste from the machine.
- Dispose of special waste in compliance with applicable regulations.
- Dispose of the machine as scrap metal.

11 Spare Parts



NOTICE

Use of non-Busch genuine spare parts.

Risk of premature failure!

Loss of efficiency!

- The exclusive use of Busch genuine spare parts and consumables is recommended for the correct functioning of the machine and to validate the warranty.

Spare parts kit	Description	Part no.
Service kit (RA 0025/0040 F)	Includes all the necessary parts for maintenance.	0992 101 463
Service kit (RA 0063/0100 F)	Includes all the necessary parts for maintenance.	0992 106 214

If other parts are required:

- Contact your Busch representative.

12 Troubleshooting



DANGER

Live wires.

Risk of electrical shock!

- Electrical installation work must only be executed by qualified personnel.



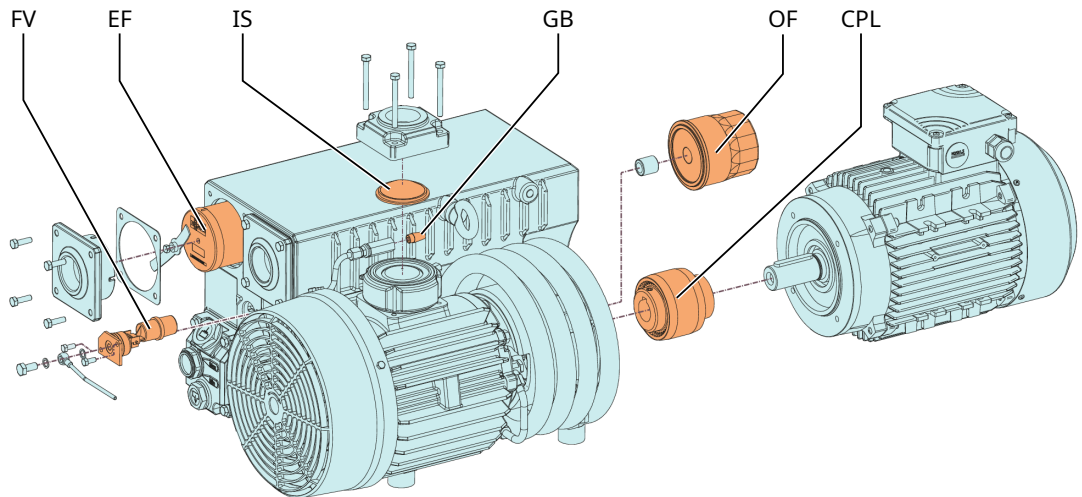
CAUTION

Hot surface.

Risk of burns!

- Before doing anything that requires touching the machine, let it cool down first.

Illustration showing parts that may be involved during troubleshooting:



Description			
IS	Inlet screen	CPL	Coupling
GB	Gas ballast valve	EF	Exhaust filter
FV	Floating valve	OF	Oil filter

Problem	Possible Cause	Remedy
The machine does not start.	The motor is not supplied with the correct voltage.	• Check the power supply.
	The motor is defective.	• Replace the motor.
	The coupling (CPL) is defective.	• Replace the coupling (CPL).

Problem	Possible Cause	Remedy
The machine does not reach the usual pressure on the suction connection.	Oil level too low.	<ul style="list-style-type: none"> • Top up oil.
	The inlet screen (IS) is partially clogged.	<ul style="list-style-type: none"> • Clean the inlet screen (IS).
	The inlet filter cartridge (Optional) is partially clogged.	<ul style="list-style-type: none"> • Replace the inlet filter cartridge.
	Internal parts are worn or damaged.	<ul style="list-style-type: none"> • Repair the machine (Contact Busch).
The machine runs very noisily.	Worn coupling (CPL).	<ul style="list-style-type: none"> • Replace the coupling (CPL).
	Stuck vanes.	<ul style="list-style-type: none"> • Repair the machine (contact Busch).
	Defective bearings.	<ul style="list-style-type: none"> • Repair the machine (contact Busch).
The machine runs too hot.	Insufficient cooling.	<ul style="list-style-type: none"> • Remove dust and dirt from the machine. • Check the cooling fan.
	Ambient temperature too high.	<ul style="list-style-type: none"> • Observe the permitted ambient temperature.
	Oil level too low.	<ul style="list-style-type: none"> • Top up oil.
	The exhaust filters (EF) are partially clogged.	<ul style="list-style-type: none"> • Replace the exhaust filters (EF).
The machine fumes or expels oil droplets through the gas discharge.	The exhaust filters (EF) are partially clogged.	<ul style="list-style-type: none"> • Replace the exhaust filters (EF).
	An exhaust filter (EF) with o-ring is not fitted properly.	<ul style="list-style-type: none"> • Ensure the correct position of the exhaust filters (EF) and the o-rings.
	The float valve (FV) does not work properly.	<ul style="list-style-type: none"> • Check the float valve and the oil pipe for clogging. Remove the clogging.
	Version with oil return valve: The machine runs for more than 2 hours without interruption.	<ul style="list-style-type: none"> • Regularly shut down the machine for short periods of time (see Version with Oil Return Valve).
Abnormal oil consumption.	Oil leaks.	<ul style="list-style-type: none"> • Replace seals (Contact Busch).
	The float valve (FV) does not work properly.	<ul style="list-style-type: none"> • Check float valve and the oil return line, repair it if necessary (Contact Busch).
	The machine runs at atmospheric pressure for a long period.	<ul style="list-style-type: none"> • Make sure that the machine operates under vacuum.
The oil is black.	Oil change intervals are too long.	<ul style="list-style-type: none"> • Flush the machine (contact Busch).
	The inlet filter (optional) is defective.	<ul style="list-style-type: none"> • Replace the inlet filter.
	The machine runs too hot.	<ul style="list-style-type: none"> • See problem "The machine runs too hot".

Problem	Possible Cause	Remedy
The oil is emulsified.	The machine sucked in liquids or significant amounts of vapor.	<ul style="list-style-type: none">• Flush the machine (contact Busch).• Clean the filter of the gas ballast valve (GB).• Modify the operational mode (see <i>Conveying Condensable Vapors</i> [→ 19]).

For resolution of problems not listed in the troubleshooting table, please contact your Busch representative.

13 Technical Data

		RA 0025 F	RA 0040 F
Nominal pumping speed (50 / 60 Hz)	m ³ /h	25 / 30	40 / 48
	ACFM	- / 17.6	- / 28.2
Ultimate pressure without gas ballast	hPa (mbar) abs.	0.1 ... 0.5 see nameplate (NP)	
	TORR abs.	0.075 ... 0.375 see nameplate (NP)	
Ultimate pressure with gas ballast	hPa (mbar) abs.	0.5 ... 1.5 see nameplate (NP)	
	TORR abs.	0.375 ... 1.125 see nameplate (NP)	
Nominal motor rating (50 / 60 Hz)	kW	1.0 / 1.2	1.4 / 1.7
	HP	- / 1.5	- / 2
Nominal motor speed (50 / 60 Hz)	min ⁻¹	1500 / 1800	
Power consumption at 100 mbar (50 / 60 Hz)	kW	0.8 / 0.9	1.1 / 1.2
	HP	- / 1.2	- / 1.6
Power consumption at ultimate pressure (50 / 60 Hz)	kW	0.5 / 0.6	0.6 / 0.7
	HP	- / 0.8	- / 0.9
Sound pressure level (ISO 2151) KpA = 3 dB	dB(A)	60 / 63	63 / 66
Water vapor tolerance max. with gas ballast (50 / 60 Hz)	hPa (mbar) abs.	40	
	TORR abs.	30	
Water vapor capacity with gas bal- last (50 / 60 Hz)	kg/h	0.9	1.1
	lbs/h	1.98	2.4
Ambient temperature range	°C	5 ... 40 *	
	°F	41 ... 104 *	
Inlet gas temperature range	°C	5 ... 40 *	
	°F	41 ... 104 *	
Ambient pressure		Atmospheric pressure	
Oil capacity	l	1.0	
	qts.	1.0	
Weight approx.	kg	40 **	45 **
	Lbs.	80 **	95 **

* In case of higher or lower temperatures, please consult your Busch representative.

** The weight can vary depending on the order.

		RA 0063 F	RA 0100 F
Nominal pumping speed (50 / 60 Hz)	m ³ /h	63 / 76	100 / 120
	ACFM	- / 44.7	- / 70.6
Ultimate pressure without gas ballast	hPa (mbar) abs.	0.1 ... 0.5 see nameplate (NP)	
	TORR abs.	0.075 ... 0.375 see nameplate (NP)	
Ultimate pressure with gas ballast	hPa (mbar) abs.	0.5 ... 1.5 see nameplate (NP)	
	TORR abs.	0.375 ... 1.125 see nameplate (NP)	
Nominal motor rating (50 / 60 Hz)	kW	2.0 / 2.4	2.7 / 3.4
	HP	- / 3	- / 5
Nominal motor speed (50 / 60 Hz)	min ⁻¹	1500 / 1800	
Power consumption at 100 mbar (50 / 60 Hz)	kW	1.3 / 1.5	1.9 / 2.4
	HP	- / 2	- / 3.2
Power consumption at ultimate pressure (50 / 60 Hz)	kW	0.7 / 0.8	1.2 / 1.5
	HP	- / 1.0	- / 2.0
Sound pressure level (ISO 2151) KpA = 3 dB	dB(A)	64 / 67	65 / 68
Water vapor tolerance max. with gas ballast (50 / 60 Hz)	hPa (mbar) abs.	40	
	TORR abs.	30	
Water vapor capacity with gas bal- last (50 / 60 Hz)	kg/h	1.8	2.8
	lbs/h	3.9	6.1
Ambient temperature range	°C	5 ... 40 *	
	°F	41 ... 104 *	
Inlet gas temperature range	°C	5 ... 40 *	
	°F	41 ... 104 *	
Ambient pressure		Atmospheric pressure	
Oil capacity	l	2.0	
	qts.	2.1	
Weight approx.	kg	55 **	75 **
	Lbs.	125 **	165 **

* In case of higher or lower temperatures, please consult your Busch representative.

** The weight can vary depending on the order.

14 Oil

	VM 100	VSA 100	VSB 100	VSC 100
ISO-VG	100	100	100	100
Oil type	Mineral oil	Synthetic oil	Synthetic oil	Synthetic oil
Part number 1 L packaging	0831 000 060	0831 163 968	0831 168 351	0831 168 356
Part number 5 L packaging	0831 000 059	0831 163 969	0831 168 352	0831 168 357

In case of unfavorable ambient temperature, other oil viscosities may be used. Please consult your Busch representative for more details.

To find out which oil needs to be filled into the machine, please refer to the nameplate (NP).

Oil suitability

- **Oil VM 100:** Standard oil for operating temperatures <90°C.
- **Oil VSA 100:** Suitable for food applications (H1)
 - With additives against corrosion
 - Light cycle operation (long downtime)
 - Operating oil temperature <100°C
 - Compliant with kosher and halal standards.
- **Oil VSB 100:** Suitable for food applications (H1)
 - Continuous and harsh cycle operation
 - Compliant with kosher and halal standards.
- **Oil VSC 100:** Suitable for harsh applications.

15 EU Declaration of Conformity

This Declaration of Conformity and the CE-markings affixed to the nameplate are valid for the machine within the Busch scope of delivery. This Declaration of Conformity is issued under the sole responsibility of the manufacturer.

When this machine is integrated into a superordinate machinery the manufacturer of the superordinate machinery (this can be the operating company, too) must conduct the conformity assessment process for the superordinate machine or plant, issue the Declaration of Conformity for it and affix the CE-marking.

The manufacturer is determined by the serial number:

Serial number starts with **DEM1...**

Busch Produktions GmbH
Schauinslandstr. 1
79689 Maulburg
Germany

Serial number starts with **USM1...**

Busch Manufacturing LLC
516 Viking Drive
Virginia Beach, VA 23452
USA

declares that the machine: R5 RA 0025 F; R5 RA 0040 F; R5 RA 0063 F; R5 RA 0100 F

fulfill(s) all the relevant provisions from EU directives:

- 'Machinery' 2006/42/EC
- 'Electromagnetic Compatibility' (EMC) 2014/30/EU
- 'RoHS' 2011/65/EU Restriction of the use of certain hazardous substances in electrical and electronic equipment (incl. all related applicable amendments)

and comply(-ies) with the following harmonized standards that have been used to fulfill those provisions:

Standards	Title of the Standard
EN ISO 12100 : 2010	Safety of machinery - Basic concepts, general principles of design
EN ISO 13857 : 2019	Safety of machinery - Safety distances to prevent hazard zones being reached by the upper and lower limbs
EN 1012-2 : 1996 + A1 : 2009	Vacuum pumps - Safety requirements - Part 2
EN ISO 2151 : 2008	Acoustics - Noise test code for compressors and vacuum pumps - Engineering method (grade 2)
EN 60204-1 : 2018	Safety of machinery - Electrical equipment of machines - Part 1: General requirements
EN IEC 61000-6-2 : 2019	Electromagnetic compatibility (EMC) - Generic standards. Immunity for industrial environments
EN IEC 61000-6-4 : 2019	Electromagnetic compatibility (EMC) - Generic standards. Emission standard for industrial environments

Legal person authorized to compile the technical file and authorized representative in the EU (if the manufacturer is not located in the EU):

Busch Dienste GmbH
Schauinslandstr. 1
DE-79689 Maulburg

Maulburg, 01.11.2023



Dr. Martin Gutmann
General Manager
Busch Produktions GmbH

Virginia Beach, 01.11.2023



Dalip Kapoor
Chief Counsel, Legal & Compliance Officer
Busch Manufacturing LLC

16 UK Declaration of Conformity

This Declaration of Conformity and the UKCA-markings affixed to the nameplate are valid for the machine within the Busch scope of delivery. This Declaration of Conformity is issued under the sole responsibility of the manufacturer.

When this machine is integrated into a superordinate machinery the manufacturer of the superordinate machinery (this can be the operating company, too) must conduct the conformity assessment process for the superordinate machine or plant, issue the Declaration of Conformity for it and affix the UKCA-marking.

The manufacturer is determined by the serial number:

Serial number starts with **DEM1...**

Busch Produktions GmbH
Schauinslandstr. 1
79689 Maulburg
Germany

Serial number starts with **USM1...**

Busch Manufacturing LLC
516 Viking Drive
Virginia Beach, VA 23452
USA

declares that the machine: R5 RA 0025 F; R5 RA 0040 F; R5 RA 0063 F; R5 RA 0100 F

fulfill(s) all the relevant provisions from UK legislations:

- Supply of Machinery (Safety) Regulations 2008
- Electromagnetic Compatibility Regulations 2016
- Restriction of the use of certain hazardous substances in Electrical and Electronic Equipment Regulations 2012

and comply(-ies) with the following designated standards that have been used to fulfill those provisions:

Standards	Title of the Standard
EN ISO 12100 : 2010	Safety of machinery - Basic concepts, general principles of design
EN ISO 13857 : 2019	Safety of machinery - Safety distances to prevent hazard zones being reached by the upper and lower limbs
EN 1012-2 : 1996 + A1 : 2009	Vacuum pumps - Safety requirements - Part 2
EN ISO 2151 : 2008	Acoustics - Noise test code for compressors and vacuum pumps - Engineering method (grade 2)
EN 60204-1 : 2018	Safety of machinery - Electrical equipment of machines - Part 1: General requirements
EN IEC 61000-6-2 : 2019	Electromagnetic compatibility (EMC) - Generic standards. Immunity for industrial environments
EN IEC 61000-6-4 : 2019	Electromagnetic compatibility (EMC) - Generic standards. Emission standard for industrial environments

Legal person authorized to compile the technical file and importer in the UK (if the manufacturer is not located in the UK): **Busch (UK) Ltd**
30 Hortonwood
Telford - UK

Maulburg, 01.11.2023



Dr. Martin Gutmann
General Manager
Busch Produktions GmbH

Virginia Beach, 01.11.2023



Dalip Kapoor
Chief Counsel, Legal & Compliance Officer
Busch Manufacturing LLC

Notes

A large grid of small dots, arranged in approximately 30 rows and 40 columns, intended for taking notes. The dots are evenly spaced and cover most of the page area below the title.

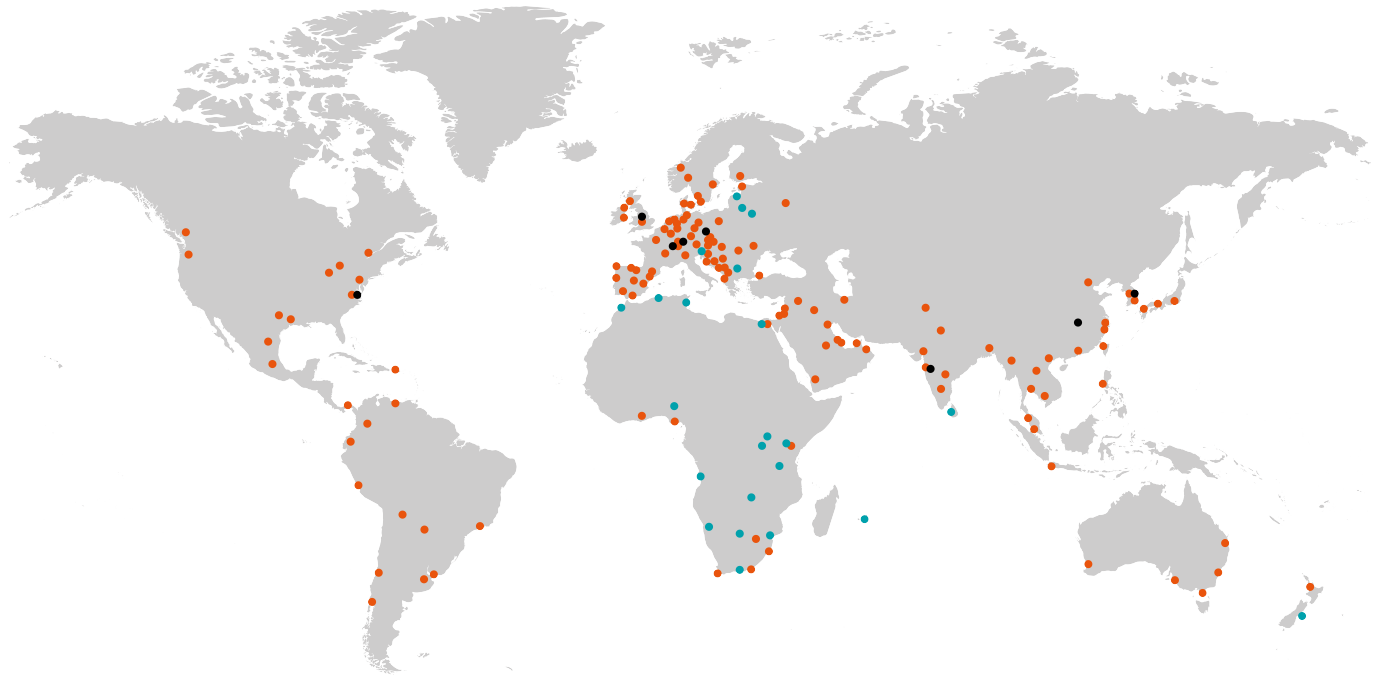


A large grid of small dots for taking notes, consisting of 30 columns and 30 rows of dots.

Busch

Vacuum Solutions

With a network of over 60 companies in more than 40 countries and agencies worldwide, Busch has a global presence. In every country, highly competent local personnel delivers custom-tailored support backed by a global network of expertise. Wherever you are. Whatever your business. We are there for you.



● Busch companies and Busch employees ● Local representatives and distributors ● Busch production site

www.buschvacuum.com